

Neighbourhood News from Hilmarton Parish

Number 8 - Volume 7 - August 2015

This Newsletter is produced for Hilmarton Parish Council
Contact the Clerk: c/o Jays Cottage, Compton Road, Hilmarton,
Calne, Wiltshire, SN11 8SG. Tel: 01249 760401 Email
jacquie88@btinternet.com-www.hilmartonparish.co.uk



Parish Council - St Laurence
Church - The School - Goatacre
S&SC - The Chapel - Hilmarton
Moviola - Phoenix Group -
Heritage Society - Gardening
Club - Bell Ringers - Preschool
& Toddlers Group Goatacre
Cricket Club - Smile - Knitti
Natters—Breakfast Club

Beversbrook-Catcombe-Clevancy-Corton-Goatacre-Highway-Hilmarton-Littlecott-New Zealand-Rodwell-Witcomb

WHAT'S ON IN AUGUST

Bingo 7th August at
the Community
Hall

6:45 for 7pm

Teddy Parachute &
Cameo Tea
15th August at the
Church

2pm to 4pm

Gardening Club
25th August
the Church Hall

7:00 for 7:30pm

Contact a
Councillor, read
the minutes
[www.hilmarton
parish.co.uk](http://www.hilmartonparish.co.uk)

PRIVATE ENTRIES

Dependent of available space,
private entries may be
accepted for inclusion in the
Neighbourhood News.
Donations of a minimum of
£10 are suggested. This
donation can go to your
chosen Parish Group. Copy
and donation, please, to
Jacquie Henly (760401)

TEDDY PARACHUTING and CAMEO TEA

Saturday 15 August
2pm to 4pm

£2 PER BEAR
(or other cuddly friend)



HILMARTON CHURCH
TOWER



GOATACRE TELEPHONE BOX OR IS IT 'THE PHONE BOOX'!!

Have you noticed the gleaming red
telephone kiosk on The Green at
Goatacre - if you stop and look
inside, you will find shelves of books
and a small notice board advertising
local events etc.

The refurbishment of the old 'box'
was made possible by a generous
grant of £600.00 awarded by
Wiltshire Council's, Calne Area
Board.

If you would like to borrow a book or
two, just help yourself and return
them when you've read them.

If you have a few books in good
condition, you could donate them -
Just drop them in when passing.



HILMARTON GROUP OPEN GARDENS

A big thank you to all those who assisted with entries, refreshments and plants,
donated cakes or visited the gardens.

Between us we raised £925.00 (185 entries) for the NGS and £230.00 each for
Pre-School and Phoenix - Total £1385 - By far, the best result to date.

**WILKINS BUILDERS LTD ARE KINDLY SPONSORING THE PRINTED COPIES OF THE
NEIGHBOURHOOD NEWS THROUGHOUT 2015 - TEL: 01249 822433**

YOUR LIBRARY BUS NEEDS YOU.

At present the Wiltshire Mobile Library Bus visits the village once a fortnight, parking in the school car park. It is a great service with a wide variety of books for all ages. It is also a valuable service especially for those who, for one reason or another, are unable to journey regularly into Calne. Ron the Librarian is very friendly and will do his best to obtain your favourite read in various formats.

In October this fantastic service will become a monthly visit partly due, we gather, to finance, but also to sadly declining numbers of book borrowers. Could this possibly be the start of the 'slippery slope' towards disbanding the service altogether?

This would be a very sad day indeed. We are very fortunate to have this, so PLEASE try to help keep this vital and very convenient service going, by just making a visit to the bus once a fortnight until October and then once a month. Even if you are a dedicated Kindle reader or not a book person at all, or even if you already visit the library in Calne, do make an effort to help keep the Bus coming to Hilmarton, for those who look forward to its visits.

Visit dates are available on the Wiltshire library website. Spread the word on your social media sites. Who knows, at the next visit on 10th August, it could be standing room only. Fingers crossed! Thank you Val Procter

all electrical work undertaken
new circuits - additional points - full rewire
energy efficient lighting design & installation



Michael Ransom

01249 813 554

www.hungrylab.co.uk 0787 110 2200

your local, registered electrical contractor

Electrical Safety Register
Incorporating
ELECTSA  ECA
Certification Ltd

HGC August Garden Tips

August is a month of plenty in the vegetable garden, and harvesting is the order of the day. All the summer vegetables will be in full flow by now, and you're likely to have plenty of beans, peas, potatoes, cucumbers, tomatoes and courgette. The vegetable patch will look very green, with mature plants covering most of the soil, and there will be lovely splashes of colour from the runner bean and courgette flowers. If the weather is very dry, don't forget to water your patch.

It is too hot to write down lots of gardening tips, now is the time to enjoy your garden. Below are some short sharp reminders of tasks for August.

1. **Keep picking your veg.**
2. **Water pots and containers daily.**
3. **Keep weeding.**
4. **Pest watch.**
5. **Harvest garlic and onions.**
6. **Tie up tomatoes.**
7. **Tidy up any harvested crops.**
8. **Shake your sweet corn.**
9. **Harvest ALL your potatoes.**
10. **Remove butterfly eggs and caterpillars from your brassicas.**
11. **Tie in autumn fruiting raspberries.**
12. **Plant new strawberry plants.**
13. **Water blueberries and cranberries.**
14. **Prune stone fruit trees.**
15. **Hang wasp traps.**

The speaker for the meeting on Tuesday 25th August is Roger Turner. He will be talking about Lust and Loveliness in the Garden.

Everyone is welcome. Come along and see us at The Hilmarton Parish Church Hall. For more information call Lesley Hudson on 07803 741293 or Geoff Procter on 01249 760312.

Walk To Remember – Marie Curie

Take an evening hike with your family and friends at Badminton Estate in South Gloucestershire, on **Saturday 15th August** to remember someone close to you. The event is being organised by Marie Curie and will be raising funds to care for people living with a terminal illness. It costs £10.00 to enter and will be starting at 6.30pm.

After completing the walk, settle down and enjoy the festival-like celebrations with live music, entertainment and the Walk to Remember fireworks at 10pm. The fireworks coincide with the time many Marie Curie Nurses start their night shift, providing care to people with terminal illnesses and their families in their own homes.

We're asking each walker to aim to raise £100 which pays for five hours of care. With your help, Walk to Remember at the Badminton Estate will raise significant money to care for even more people with terminal illnesses and provide support for their families. Every additional £20 raised will provide another hour of care and £180 pays for a nurse's full shift.

To register please visit www.mariecurie.org.uk/walkbadminton or call 0845 052 4184

DOG OWNERS

There has been many complaints recently, of the unacceptable increase of dog fouling around the Village. This disgusting, grossly irresponsible and illegal act must be halted.

Anyone who witnesses either, an owner walking a dog and not clearing up after it, or see an unaccompanied dog, record the details, ideally on your phone's camera, and report direct to the Dog Warden at Wiltshire Council, or pass the information to any Parish Councillor or the Parish Clerk.

We shall be more than happy to 'Name and Shame' in subsequent newsletters and social media sites.

Wildlife cameras are an excellent method of capturing unsuspected violation during daylight and darkness.

CHURCHYARD

Have you noticed how wonderful the Churchyard is now looking, if not, why don't you take a stroll around it and see the difference since the trees have been trimmed, since Kevin Iles has cleared and levelled mounds of excess soil, removed overgrown foliage, sown grass seed, resulting in a very well kept Churchyard. Kevin goes the 'extra mile' in the upkeep of our Churchyard, often spending much more time than he receives payment for. If you would like to contribute to the upkeep of the Churchyard, please contact the Church Warden, John Henly on 760401.

BINGO Come along to your friendly Bingo game. All cash prizes and our popular raffle.
Friday 7th August, 6:45 for 'eyes down' at 7:00pm in the Community Room – Poynder Place
 Our 'Snowball' is now £25!!!! And the draw for the June Ten Score Club!

PHOENIX – There is no meeting in August
 For more information on membership etc, please contact Ruth on 760205 or Tina on 822531.

Advertisement for new Governor

There is a vacancy for a non-parent member on the Governing Body of Hilmarton Primary School. We are particularly looking for people with Financial / Accounting or Administrator or Building experience or a particular interest in any of the above.

The governors meet six times per year at FGB (Full Governing Body) meetings, each lasting approximately two hours, with some upfront document reading and question formatting. Governors are also expected to be on at least one sub-committee which also meet six times a year. The main sub-committees at Hilmarton are Curriculum & Staffing and Finance & Premises.

If you are interested in joining our friendly and committed team, please feel free to contact any of the following:

- Nicola Hickford (Clerk): nhickford@hilmarton.wilts.sch.uk
- Sam Churchill (Headteacher): head@hilmarton.wilts.sch.uk
- Andy Hutton (Chair): ahutton@hilmarton.wilts.sch.uk

HILMARTON MOVIOLA AUTUMN SEASON

CINDERELLA Saturday 19th September (U) 109 mins

Kenneth Branagh directs big-money Disney re-telling with some super 'turns' such as Cate Blanchett's wicked stepmother (as one reviewer summed it: "Bette David does Cruella De Vil) and Helena Bonham Carter's fizzy fairy Godmother. Lily James is excellent as Cinderella. However it is the visuals - fabulous costumes and colour palette - which really stand out.

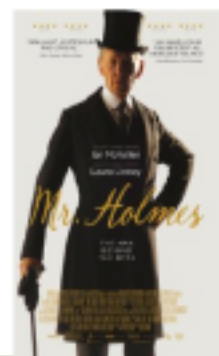


A ROYAL NIGHT OUT Saturday 17th October (12A) 97mins

Loosely based on a legend, this gentle romantic drama depicts the evening of VE day, when Britain's two princesses escaped the palace and met the people. Hardly a film that will change history but enormously enjoyable and with big appeal to our core audience. Rupert Everett and Emily Watson have a great time as the King and Queen but it is the exquisitely sensitive, almost porcelain depiction of Princess Elizabeth by Canadian actress Sarah Gadon which steals the picture.

MR HOLMES Saturday 21st November (PG) 104 mins

Tour de force performance from Ian McKellen as the ageing Holmes. With his memory beginning to fade, he moves into a country house at the end of World War 2. He is befriended by the young son of his housekeeper and embarks on one last, almost forgotten unsolved case from half a century ago, which helps him solve a riddle that has always eluded him – relationships. An elegant and absorbing British film that will have wide appeal.



The Library Bus will visit the School Hall car park 1:30pm to 1:50pm Mon. 10th & 24th

CHAPEL ACTIVITIES IN AUGUST

Sunday 2 nd	Family Service	4:00pm
Sunday 9 th /16 th /23 rd /30 th	Service	6:00pm
Tuesday 4 th	Knitti Natters	7:00pm
No Ladies Meeting in August	Ladies Meeting	2:00pm
Wednesday 12 th & 26 th	Coffee Morning	10:00am
Thursday 6 th & 20 th	Smile Group	10:00am
Friday 7 th /14 th /21 st /28 th	Prayer Group at Audrey Peolar's Dauntsey	2:30pm

On Bank Holidays

The August Bank Holiday is one of my favourites – probably because in August I'm often away taking the 'holiday' bit. The May ones tend to find my husband teaching for the summer exam season. The Christmas and Easter ones bring a different kind of delight but I am normally working.

However, this year I've been thinking more about the 'Bank' half of the phrase.

If I say our holiday is booked for a Greek island you may not be surprised that I've been paying more than the usual interest in the financial news; watching queues at cash machines on TV and listening to arguments about economic policy, debt and Grexit.

Interest, money and debt are subjects of interest in the Bible too. There are rules and guidance on what can be kept in pledge for a debt and frameworks for debt relief. There are conversations on the uses of money that turn – heads and tails – on the image of an emperor on a coin and stories about what workers should be paid.

It's tempting to leap to some of the more famous sayings about the challenge of serving God or money or about rich men and eyes of needles but my ponderings remind me of how closely stitched together we are and about how complicated it is to unpick our connections. Sometimes I'm started to remember that my childhood didn't include plastic cards and holes in the wall but piggy banks and post office accounts. I might try and buy fairtrade or shop ethically but my bank account means that I too am linked to financial scandals and through my pension provision I find I too 'share' in the arms trade, fossil fuels and, as the Archbishop of Canterbury discovered, in organisations like wonga.

When it comes to money, debt and interest it feels impossible to be clean of compromises between my ideals and the reality of modern life. Maybe it's a reminder of the deep interconnected and interdependence of human beings.

So as I ponder whether our pounds might now go further, but might have to be carried around as cash rather than securely banked. I find myself saying the version of a prayer that Jesus taught his friends which goes: 'Forgive us our debts as we also have forgiven our debtors'. Matthew 6:12.

Reverend Rachma Abbott, Priest in Charge Woodhill Benefice, The Vicarage, Clyffe Pypard, Swindon, Wiltshire, SN4 7PY.

Tel 01793 731134

Date	HILMARTON	Date	Other Benefice Churches
Sunday 2 nd Aug.		Sunday 2 nd August	9:15am Family Communion, Tockenham 11:00am Family Communion, Broad Town 6:00pm Evensong, Clyffe Pypard
Monday 5 th Aug.	2pm Communion in Church followed by tea & coffee		
Sunday 9 th Aug.	10:30am Benefice Communion for St Laurence Followed by barbecue	Sunday 9 th August	
Sunday 16 th Aug.	6:00pm Evensong	Sunday 16 th August	9:15am Family Service with Baptism, Tockenham 11:00am Sung Communion, Broad Town
Sunday 23 rd Aug.	9:15am Communion	Sunday 23 rd August	8:00am Communion, Broad Town 11:00am Communion, Clyffe Pypard
Sunday 30 th Aug.		Sunday 30 th August	10:30am Benefice Communion for St Giles

CHURCHES RIDE AND STRIDE - 12th September 'If you are interested in participating in Ride and Stride then please contact Mair on 760308/ mair1@mail.com for entry forms and further information. If you can spare an hour of your time on the day to sit in the church so that it can be opened to welcome the riders then please contact Trish on 760638'

Knitti Natters. Just a reminder to all those who knit and crochet that Knitti Natters meet on the first Tuesday of each month in the Chapel, Hilmarton 7 until 8.30pm where we enjoy a chat and a cuppa.

We shall soon be completing the Lifeboat Project and will be starting a new venture which will involve weaving on a peg loom - not only with wool but also with recyclable materials – as well as knitting and crochet. We are planning to enter the finished item into the Calne Art Festival this year. If you are already part of the group please don't forget the August meeting and find out more about the project. If you knit, crochet or weave and would like to join us do come along, we would be delighted to welcome you.

For enquiries about Baptisms, Weddings, Funerals or other special services please phone Rev'd Abbott (01793 731134), Lay Pastoral Assistant – Val Procter (760312) or Churchwarden, John Henly (760401)

NEIGHBOURHOOD NEWS-EDITING TEAM NOTES - ITEMS FOR INCLUSION IN THE AUGUST EDITION BY 18th JULY PLEASE TO: Mel Wilkins 760572 melwilkins@live.com - Jacquie Henly, Jays Cottage, Compton Road, Hilmarton 760401 jacque88@btinternet.com - Geoff Procter, Breda Cottage, Church Road, Hilmarton 760312 geoffhilmarton@hotmail.co.uk **PLEASE PROVIDE YOUR ENTRY IN Microsoft 'WORD' FORMAT**

The logo for 'Ride+Stride for Churches' features the words 'RIDE+STRIDE' in a large, orange, stylized font. The 'R' has a gear-like texture, and the 'S' has a triangular shape above it. Above the letters are blue decorative elements: a chain of circles on the left and three triangles on the right. Below 'RIDE+STRIDE' is a green rectangular box containing the text 'for Churches' in white, lowercase letters.

RIDE+STRIDE for Churches

Taking part in **Ride+Stride** is an excellent way to combine raising a bit of money for your church with spending an enjoyable day out exploring your local area on foot, bike or horseback, and visiting some of the Wiltshire's rich heritage of churches.

Bear Grylls, adventurer, Chief Scout, Wiltshire resident and supporter of Ride+Stride, writes: *"Many historic churches, chapels and meeting houses are battling to survive. Roofs leak, ancient timbers rot and medieval stonework crumbles. Now you can help by joining the Ride+Stride adventure, a sponsored bike ride or walk discovering beautiful churches, which also raises money for their repair and preservation."*

Half of all money raised goes to your own chosen church, and the other half is used by the Trust to award grants to churches with special maintenance needs. You don't have to be as fit and energetic as Bear Grylls: just walking between one church and another can constitute participation in Ride+Stride, and most sponsors are generous enough to reward even the shortest of journeys. For the more competitive, however, there are cash prizes for the best achievements, including several for under 15-year-olds, and parishes which mobilise large numbers of participants can compete for the Brooke Cup and Junior Group Cup.

Last year R+S raised over £58,000 for Wiltshire's churches. Can you join in on **September 12th** this year and help us top £60,000? The chances are very high that you will enjoy it! For more information, please contact Charles Graham (01672 514301 or ctg100@hotmail.com) or visit www.wiltshirehistoricchurches.org.